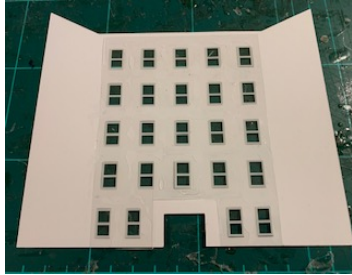
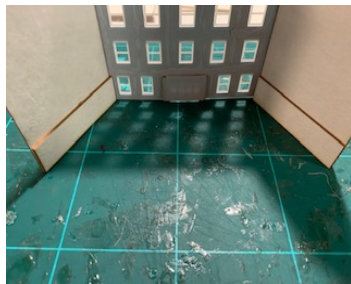


N Scale Flats

Thanks for purchasing one of my kits,
This kit just requires glue, scissors and a brown
felt tip pen.



Place both walls down on a dark surface, cut the windows out on the white outline so you have a complete sheet of front of windows, they only fit one way so lay them on the card first then glue in place, then both door surrounds as shown above, then the doors. Glue the two large plain gables to each side as shown above.



glue a floor support from bag 1 to the bottom of each plain gable as shown above then run a line of glue on the top of each support and on the front edge of one of the floor pieces of plain card, then glue as shown above, then from Bag 2 glue 2 of the slightly larger supports on top of the floor you just fixed, then repeat until all 4 floors are in place. Then use the 4 small plain gables. glue one each end and 2 in the middle as shown, this will give the roof good support.



Now we can glue the other main wall in place, glue all the card edges and the gables then fix in place, use the brick gables and glue on each end to cover up the join seam, now we can fix the roof in place. use the 2 final supports from bag 1 and glue to the edge of each front door surrounds. Colour the 2 fascia boards with a felt pen and glue on each gable under the roof.