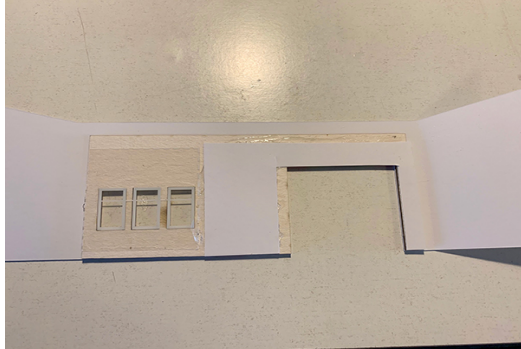
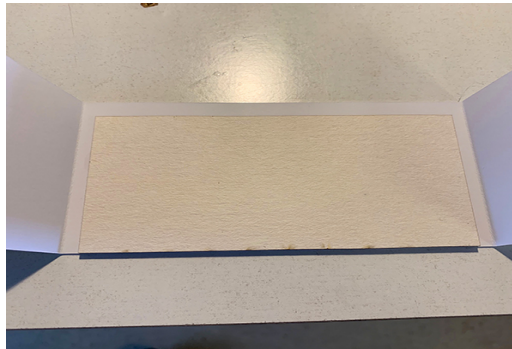


OO Scale industrial unit

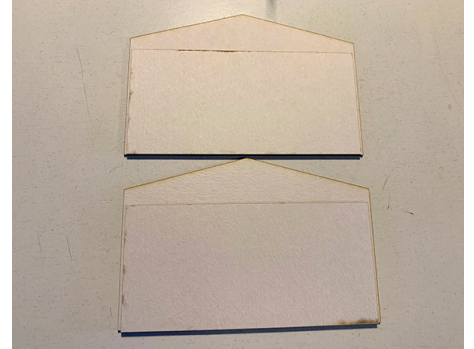
Thanks for purchasing one of my kits,
This kit just requires glue and scissors.



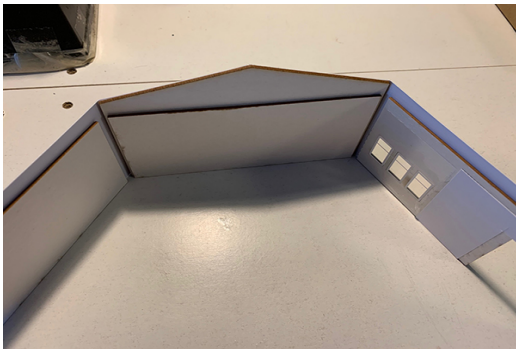
Glue the plain card window and door surround to the front walls.



find the 5 large plain oblong pieces of card, use the long piece and glue to the back wall in the center of the crease marks.



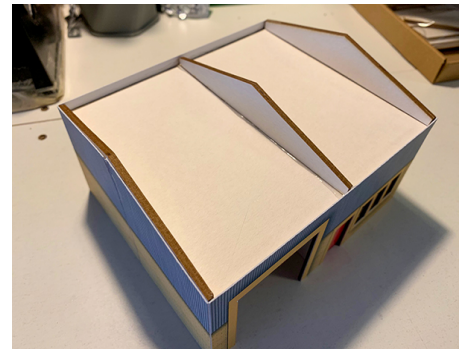
of the 4 remaining oblong pieces of card use the shortest 2 and fix one to each plain gable end and center it



now glue the walls to the plain card gables as shown .



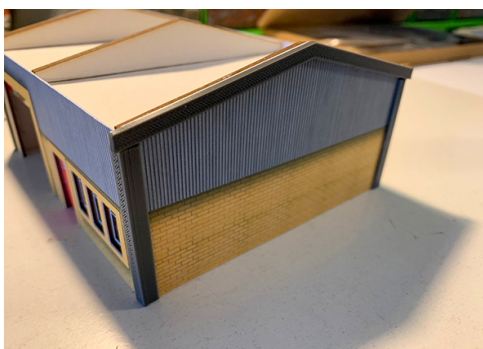
run a line of glue along the ceiling supports then gently push the ceiling in to place.



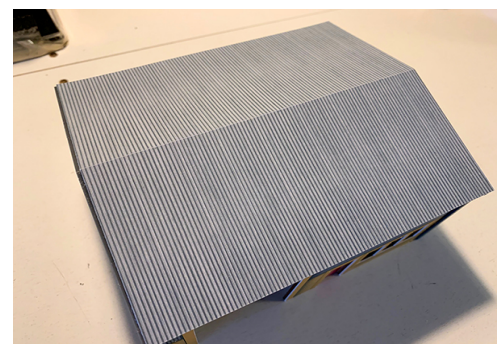
Find the 4 roof supports glue one to each end then glue 2 together and glue in the middle .



Glue the x4 plastic corners on as shown.



Glue the plastic fascia on.



Now the roof.

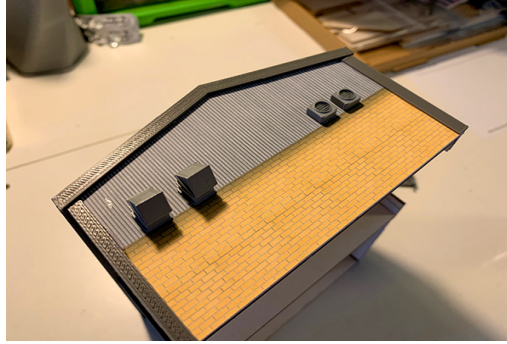


OO Scale industrial unit

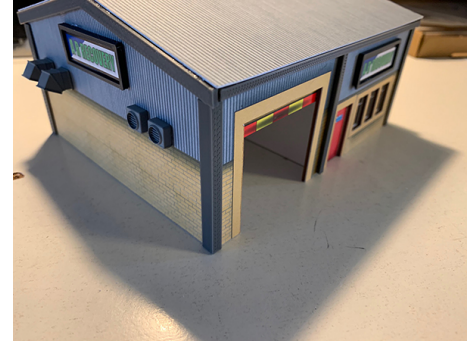
Thanks for purchasing one of my kits,
This kit just requires glue and scissors.



Glue the last 2 oblong pieces of card together and glue underneath as shown.



It's up to you where and what side you glue the vents and air con unit.



Cut out 4 of the signs you've chosen and glue in the sign frames and fix where you like.