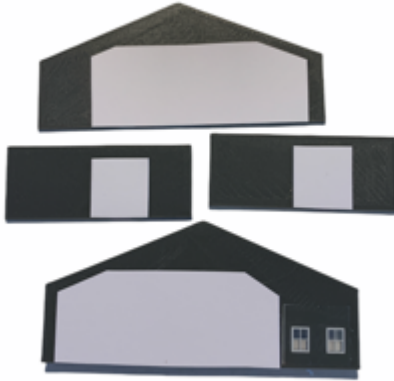


N Scale BRS Depot

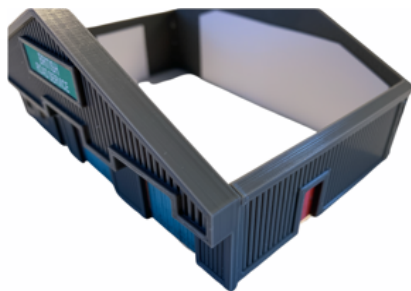
Thanks for purchasing one of my kits,
This kit just requires **Gel glue & Scissors**.
Please keep all parts away from children



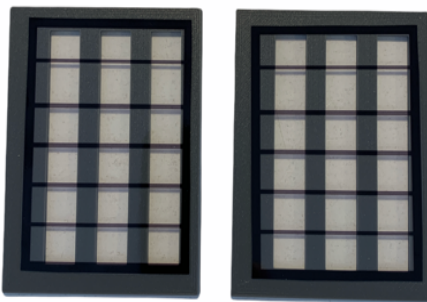
A non super glue Gel glue is recommended



Firstly glue all the card doors
& windows as shown left. with the
signs cut the black line off so your
left with just the green sign then
fix as shown right.



place the front and back section face down and run
a line of gel glue on the end of each panel, if you
look at the image left the side panel is on the inside,
let the glue cure for a couple of mins and fix the
panels together as shown left.



cut the roof windows out and fix shown left.

Run a line of glue on top the sides front and
back, again give the glue a couple of mins
then glue the roof on, if you look at the pic
the wider dection goes to the bottom as the
other side is angled slightly.

