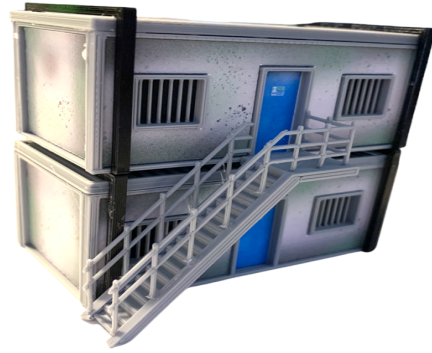
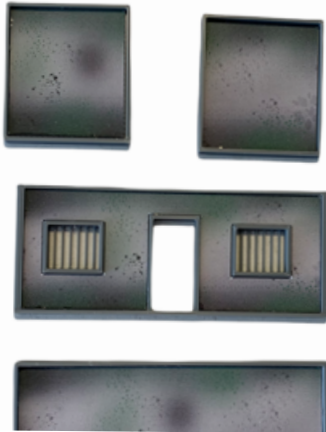


N/00 Site offices

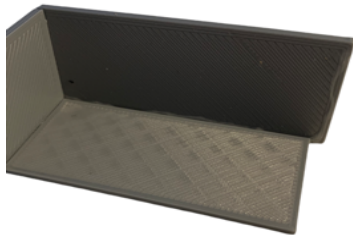
Thanks for purchasing one of my kits,
This kit just requires **Gel glue & Scissors**.
Please keep all parts away from children



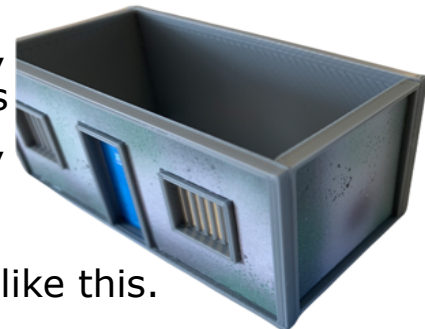
A non super glue Gel glue is recommended



Firstly glue all the card sections as shown left, then the door as shown right, when fixing the door make sure there is a gap at the bottom as the floor section fits this, it might pay to affix the door with the floor handy just to make sure it fits.



Now glue the walls to the floor section, Gel glue works great on this as it holds straight away, the floor is on the inside, fix all 4 walls.



It should now look like this.

Run a line of glue on top the sides front and back, leave to go tacky for a few minutes then place the roof on. then the black U shape separators, then leave to dry as it will need to be handled for the stairs, Once dry enough to handle, lay the buildings on there back, then glue the steps on, glue at the bottom of the door and on near the bottom of the black separator.

