

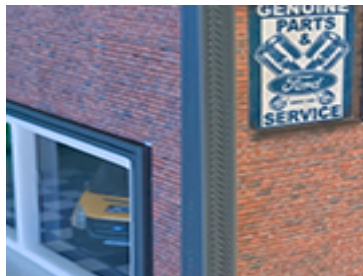
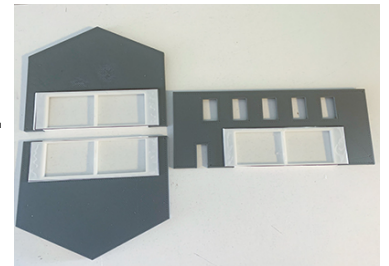
OO Scale Showroom

Thanks for purchasing one of my kits,
This kit just requires Gel glue. Please keep all
parts away from children

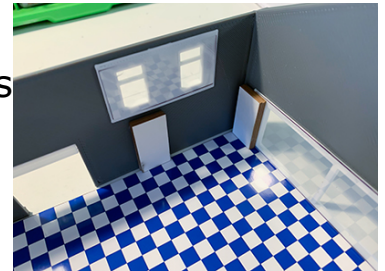
A non super glue Gel glue is recommended



Firstly glue all the card brick panels
to the plastic walls shown left, then
the windows and doors shown right.



Using a gel glue fix the walls
together making sure the side panels
are on the inside and flush as shown
left, now glue the small plain card
pieces together in 3's to form the
floor support and glue around the
bottom in any location 2x per panel.



now run a line of glue on top of the supports you just
fixed and place the floor on top of them, I then left it
for an hour for the glue to set.



Now a line of glue on all 4 edges of the walls and then
fix the roof, when it's all dry I turned it over and run
glue around all the edges to make it extra strong.